

IMPROVING BREAST CANCER DETECTION THROUGH INNOVATIVE TECHNOLOGY



Koning KBCT Breast Imaging System Partial Specifications

Electrical: Standard single phase power

Table Capacity: 200 kg (~ 441 lbs.)

Patient Table Height: Elevates to 1.5(~5 ft.)for biopsy.

Recommended Room Size: 3 m x 4.3 m(~10 ft. x ~14 ft.)

Resolution: High Resolution mode = .155mm³; Voxel size in Standard mode = .273mm³

KONING IS APPROVED BY THE FDA FOR COMMERCIAL, DIAGNOSTIC USE.

KBCT now available at:



Koning

A better way of breast imaging



NO COMPRESSION

LOW DOSE

REAL 3D IMAGES

www.koninghealth.com

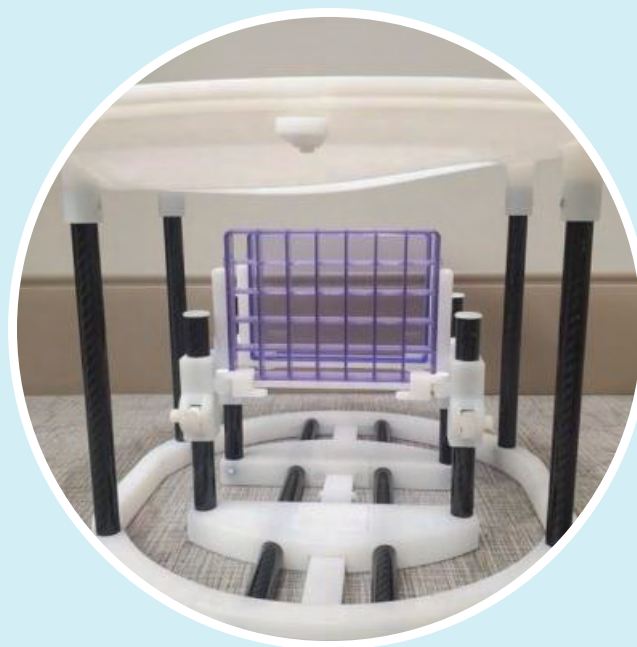


KBCT 360° acquisition provides excellent tissue coverage from chest wall to nipple, regardless of breast size - all while improving the patient's breast imaging experience.

Koning

Koning's 3D KBCT diagnostic breast imaging device produces high contrast, **REAL 3D images** without painful compression. It does this at radiation levels similar to diagnostic mammograms - in just 10 seconds.

KBCT removes the common practice of extrapolating image information from compressed tissue. By introducing **co-registration of isotropic breast image data in 3 planes**, it provides true 3D images without the need to deform the breast with compression.



KBCT biopsy attachment is a rapid mount accessory that replaces the need for stereotactic biopsy equipment. KBCT 3D guided biopsy procedures reduce the dose to the patient by **over 50% when compared to stereotactic biopsy systems**.

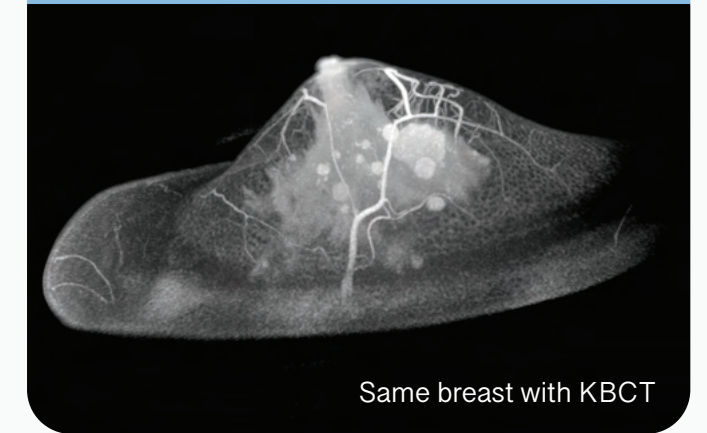
THE DIFFERENCE IN IMAGE QUALITY AND PRESENTATION IS **REMARKABLE**

Poor result, especially with small dense breasts



MAMMOGRAMS

Easily captures superior images



Same breast with KBCT

KBCT

KBCT radiation levels are comparable to conventional mammograms, yet Koning technology allows for a more effective and efficient method of breast imaging.

KBCT can replace:

Diagnostic mammograms	with no compression
Stereotactic biopsy devices	with >50% reduction in dose and in 15 minutes
MRI exams	with no claustrophobia, no gadolinium, and a 10 second scan

"KBCT allows radiologists to manipulate the image, not the patient!"

*- Dr. Avice O'Connell, Director Women's Imaging,
University of Rochester Medical Center*